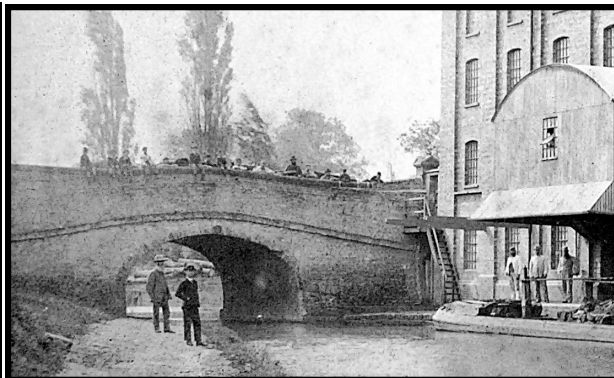


Round and About

www.blisworthvillage.org.

Blisworth Parish Council Newsletter

May/June 2017 No 115



Notes from the Chairman.....

Planning.

Other than a few minor planning apps for extensions nothing major has come in. One disappointing item though is regarding the new affordable homes site on Connegar Leys. As you may be aware your PC was pushing for additional parking on the grassed area opposite, this has been turned down and I quote the response from the Planning officer.

SNC asked the developer to carry out a survey of the users of the garages, it was found that only 1 or 2 were being used for car parking by local residents, therefore it was decided that the developer had no liability to provide additional parking. The statement was **"The Parking problem is already an issue therefore it is not the developers liability to solve it"** I would have thought that SNC could have been more receptive to the problem?

Petition Re. The Condition of the roads and footpaths in the village.

As promised in the last issue your PC have organized a petition to send to the Highways authority expressing our concern about the state of our roads, we have received well over 300 signatures and these will be forwarded "together with photos of the potholes" to both Highways and the County Councillor responsible for roads.

Neighbourhood Watch Co-ordinator

We still have a vacancy for a co-ordinator, it's not an onerous position and providing you have internet facilities it's mainly a task of forwarding information received to the interested people in the village.

The Old Cemetery

At long last, after a very productive meeting with the Archdeacon we have been able to solve the problem of the missing section of boundary wall. The works have been carried out and we have planted a double hedge "two metres apart" of copper Beech and in filled the middle area with Cornus shrubs "Dogwood".

My Last Posting

I shall be retiring from the position of your Chairman at the Parish Council's AGM in May. I would like to thank all of you that have given me support over the past three years, especially my fellow Councillors.

I hope my notes have been of interest to you and I would like to offer you all, my best wishes for the future.

Charlie Jeffery, Chairman Blisworth Parish Council.
07778-001780

Blisworth Parish Church

"On the first day of the week the women went to the tomb. They found the stone rolled away from the tomb, but when they entered they did not find the body of the Lord Jesus. Suddenly two men in clothes that gleamed like lightning stood beside them. The men said to them "Why do you look for the living among the dead? He is not here, He has risen!" Luke 24 1 - 6

The above quote is slightly shortened for space, but states the foundational belief of the Church, and of her people as Easter People. For this reason, Easter is the major Christian festival, even above Christmas, for without Christ's resurrection, the Church would not exist.

Easter Day has just passed, many people worked hard to fill the church with flowers in white and yellow, and the beautiful white and gold altar hangings were in place. Our Easter service was led by Peter Heffron, Lay Reader from Milton Malsor, allowing Revd. Andrea and Revd. Sue to lead services elsewhere in the Benefice. The service began with the traditional greeting between priest and people – "Christ is risen! He is risen indeed. Alleluia!" We were pleased to welcome a large congregation and hope that everyone took away words of hope, of joy, and inspiration.

Our "cycle of prayer" for the village continues. Each week prayers are said for all residents, businesses etc. in two or three roads. Three-monthly lists are on the prayer board: you might like to note when your road is the focus for our prayers. A number of people find this ancient building a place of peace away from the rush of ordinary life. The doors are open for a major part of most days – apologies if you visit at a time when the doors are unavoidably closed.

In April Hilary Spurrier held an event to raise funds for Stepanavan, the Armenian village the church supports. An excellent and well attended lunch raised around £600.

At the annual Parishioners' meeting Vyvien Day and John Smith stood down after their term of office, and were thanked. Pat Masterman and Hilary Spurrier were elected, and John Smith was co-opted to continue his valuable work overseeing care for the fabric of the building.

Rector	The Revd. Andrea Watkins	857619
Warden	Fiona McKenzie	859541

The New Village Website

The Parish Council is delighted to announce the launch of the new website: www.blisworthvillage.org. It has two parts: PC matters and village life in the wider sense, please have a look. There is still work to do and it will evolve along with the village. Constructive comments and ideas can be emailed via the contact pages.



Blisworth Bookworms

It has been good to welcome new members, we have had an enjoyable few months. The next sessions are: **May 22nd & June 26th - 1.30pm – 3.30pm** 7 Westbrook Maggie Turton

Blisworth Community Choir (Musical director Helen Thorman)

We gave our first concert of the year on the 24th of March to commemorate St. Mary's Parish Church Stoke Bruerne's 800th year. We collected £270.80 for the maintenance of the church.

We are now practicing for our summer concerts:

Thursday 22nd June, 7.30 at Milton Malsor Parish Church

Thursday 20th July, 7.30 at Blisworth Parish Church
We would love to see you there.

If you would like to join the choir, we are meeting back at Blisworth Church for the summer, every Thursday 7 for 7.30pm – subs £2.

We could do with a few more men in the choir, we know you sing in the bath!! why not sing in the choir? you'll have loads of fun.

See you there. **Winnie Bateman**

Blisworth Health Walk

Join us for a FREE walk in and around the village. We meet in the car park, Eastfield, at 9.30am on the second and fourth Tuesday of each month.

Trained volunteer Walk Leaders lead each walk and there is no need to book, just turn up on the day. You don't need any special equipment, just dress sensibly for the weather and wear appropriate footwear for the conditions. After the walk we go to the Baptist Church for refreshments.

We are part of the national Walking for Health programme and the local South Northants scheme Every Step Counts.

Contact Colin Hull, Walk Co-ordinator, on 01327 322337.

Progress Group Report

By the time you read this the judging for Best Village 2017 will have taken place. We would like to thank all those who helped with information, photographs and their time especially on the actual afternoon with the judges.

Particular thanks to Trisha White for all her excellent graphics. Two and a half hours is a very short time in which to show the judges what makes Blisworth worthy of being a Best Village so eye catching displays are vital. Janet Steeper ensured that the judges had all the information available to them to use for reference in the form of a book with pictures and dialogue about current activities.

We would also like to thank everyone who took part in the Litter Pick. Amazing how much litter these volunteers found. The Group are in the process of setting up an Anti-Litter Campaign looking at all aspects of the problem and the best way to prevent littering. We will be asking external organisations such as Network Rail, Canal and Rivers Trust, Anglers for their help as well as villagers and village organisations. **Ann North**

ARE YOU A CARER?

Northants Carers care about you
Jenny will be at the Coffee House on
Tuesday May 16th and Tuesday June 20th
10.00 until 11.30am
to provide information about all kinds
of free services available to you
We are here to help, so please come along.

Wootton Road Runners Blisworth 5 Mile Race **Friday 12th May - 7.45pm**

We'd like to thank the residents of Blisworth for their continued support of our annual 5 mile road race. This year it takes place on Friday 12th May at 7.45pm. Race Headquarters is based at the Football Club and the start/finish are at Hill Farm on Gayton Road.

As usual, we'll be putting up race signage in advance of the event to pre-warn those who are affected by the route. Local residents are welcome to join the race - instructions for entry can be found at www.woottonroadrunners.co.uk. Entry for unaffiliated runners is £9.00 in advance or £12.00 on the night.

We look forward to hosting another successful event and are grateful for the patience and understanding that residents show at this time. **Hannah Groves** Race Director



Blisworth Community School

The summer term is always particularly busy in school - although we say that about every term! The Annual Ball takes place on Saturday 6 May, and we have a clothing sale on the evening of Wednesday 10 May. More information about both of these events can be obtained from the school office.

We are always looking for volunteers at school, to help on a regular basis, hearing readers or testing times tables, or adults who can help now and again with sewing, art, or baking. Anyone who works with children needs to have proper police checks, but these are carried out as a matter of routine and take about two weeks. If you have some spare time and you think you can help, please let us know. Please ring the school office for more details 858414.

Celia Irwin - Head Teacher

Blisworth Play Reading Group

The Group meets first Wednesday morning in each month. Our next meeting will be Wed 3rd May, followed by another meeting on Wed 7th June. Over the year we will be reading a bit of everything: classics, pantomime, farce, Agatha Christie and even 60's Radio Comedy Scripts. We have just finished a play called "Dracula is Undead and Well and Living in Purflleet", so we will begin a new play in May. If this looks interesting and you would like to find out what the group is all about, you would be most welcome to come along to any meeting. For further details, please phone **Dick Hennessy** on **858602**.

Jazz at the Walnut Tree

May/June, Wednesday May 10th 8pm - Tad Newton's Jazzfriends with special guest Anna Jaichner [vocals].
Wednesday June 14th 8pm - Pete Allen and his Band.
Phone **Tad Newton** on **858549**.

BVHPFA 250 Club Results

	March	April
£30	235	213
£20	2	204
£20	130	93
£10	22	81
£10	206	44

Thank you to all of our supporters, if you would like a number, and help to support your village, you get 60 goes a year for a tenner. Please contact **Estelle** on **858482**.

Blisworth Film Club

Forthcoming films to be shown in the Village Hall are:

May 25th 'A Street Cat called Bob'. The unlikely friendship between a homeless young man and a stray cat.

June 29th 'A United Kingdom'. The friendship and marriage between a London secretary and an African tribal leader causes diplomatic problems.

July 27th 'La La Land', the film everyone has been talking about, with mixed reviews.

Doors open at 7.00pm for 7.30pm start. Admission £5, bring your own drinks and cushions.

Margaret Holiday on **858590** or **Beryl Payler** on **858476**.

Blisworth Women's Institute

The year seems to be racing along with the clocks forward already and Spring well underway. Our May meeting is as always the Annual Resolutions and Social evening where we vote on this year's national resolutions after enjoying a delicious light snack.

In June we have Denise Legge speaking about 'Elizabeth - a Tudor Housewife, it will be interesting to see how much has changed!

As with many other groups in the village our thoughts are turning to the August Canal Festival, where we will again be having a prominent stall selling all manner of homemade produce.

Meetings are the second Thursday of each month at 7.30pm in the Village Hall, ladies of all ages welcome, why not come along as a visitor you are assured of a warm welcome.

Tina Alexandrou



Courteenhall Road Allotment Site

If you fancy a bit of hard work and healthy exercise with great rewards, why not take on a plot on this friendly site? Plots cost £5 per year but with a few basic tools and some packets of seeds, you will recoup this sum fairly quickly. If you cultivate your plot organically, you will be contributing to a greener environment for all sorts of reasons. No air miles will be involved in transporting your vegetables half way around the world, no animals will be harmed by pesticides and your own health will benefit from plenty of fresh vegetables.

Interested in a plot? Please contact Jane Hill on 858656.

Blisworth Litter Pick 2017

A very big thank you to all the lovely 'litta pikkas' who volunteered for our annual litter pick, you were magnificent, and very much appreciated.

Most of you managed to dispose of the litter themselves, but there was still loads brought to the Village Hall on the Sunday for photographs.

One lovely volunteer found a radiator, but left it at the side of the road while she fetched her car, and it disappeared.

It is sad though, that after all our hard work, every day there is new litter. Have you taught your children not to drop litter and, if there is not a bin in the vicinity, to bring it home. **Estelle Rose**

Blisworth Baptist Church

Matthew 16:18&19 *"Now I say to you that you are Peter (which means 'rock'), and upon this rock I will build my church, and all the powers of hell will not conquer it. And I will give you the keys of the Kingdom of Heaven. Whatever you forbid on earth will be forbidden in heaven, and whatever you permit on earth will be permitted in heaven."*

Church can look like a hundred different things because our Heavenly Father is so creative. Try to copy any of them and you will find it turns lifeless and empty. The Church thrives when people are focused on Jesus, not when they are focused on Church.

This is a great time to learn to enjoy Him together with us at Blisworth Baptist Chapel. Together we are learning to live, love and listen, and to discover what expression of Church life best fits His plans. Church is not something you can point to and say "that is the Church"! "We are the Church". Don't be afraid to live in that reality. God has amazing plans for Blisworth and you in 2017, So come and be a part of God's living Church.

Family Service every Sunday at 10.45 am
Communion every First and Third Sunday
Children are welcome

Coffee and tea are served before the service from 10.00am and also afterwards in the Coffee House

Coffee House Open
Tuesday's at 10.00am until 12.30pm
Every 3rd Tuesday is "Carers Support Day"

Men's Breakfast
Last Saturday of the Month at 8.30am in the Coffee House
Next Breakfast's: May 27th & June 24th
All men are welcome

Pastor: Keith Barker – 01327 352972
Secretary: Diane Atkinson - 01604 859590
Room Bookings: Jacques Haines - 01604 859705

Website www.blisworthbaptistchurch.org.uk
Latest information is on the Website

Blisworth Pre School

Pre school is open Monday - Friday term time.

A few spaces remaining for this school year. **Book now** to ensure a place for your child for **2017/2018**. Contact Pam on 07803662433 for further information or to arrange a visit. We look forward to seeing you.

Stitchery Do

Creating with fabric and thread



On **Thursday 4th May**, StitcheryDo returns to the Scout Hall for the Summer, with a pre-booked Sculpture Workshop with Trisha White (starting at 9.30) or you can engage in 'Own Projects'.

On **Thursday 1st June** there will be a short talk on Project Linus UK followed by a demonstration of Patchwork and Quilting with Margaret. Own projects are also welcome.

On **Monday 5th June** there is a coach trip to Lady Sew and Sew in Henley. For details contact Carol on 858776.

During July and August, there is opportunity for taking on larger scale projects and using sewing machines in the spacious surroundings of the Scout Hall and for finishing incomplete activities, with guidance from our local experts!

Sessions run from 10.00 until 3.00pm, on the first Thursday of each month, costing just £4 per day, with complimentary refreshments. New members are always welcome. Please contact Carol on 858776 or Margaret on 858590.

1st Blisworth Scout Group

How time flies, it's five years since we opened the Scout Hall. So many people have gone through the doors and yet I still get a buzz every time I enter it at how much we achieved, with the support and help of the village.

The sections are well into their exciting programmes and now the lighter nights are here they will be out and about more. Our youngsters are fantastic and accept every challenge we give them, even the rather chilly Brass Monkeys Camp! Not to mention night hikes.

Our AGM is approaching hopefully we'll get lots of volunteers to join our committee and even, dare I hope, for more volunteers to come forward as Leaders. You may have heard in the media, that although there are more volunteers in the Scout Movement than ever before, the number of youngsters on waiting lists has increased to 51,000 in the UK. Without volunteers scout groups cannot survive, whether it be as Leaders or Committee members to help look after our buildings and the administration. If you could help please contact me. Here's to our next five years and continued support from our wonderful village.

Sandra, Group Contact 858764



Blisworth Heritage Society



Friday May 12 at 7:30pm in the Village Hall
The Restoration of Delapre Abbey
by **Members of the Delapre Abbey Team**

Friday June 2 at 7:30pm in the Parish Church
An Evening of 18th century Music by Richard York

The Records in our new display cabinet in the Parish Church will be available to browse during the afternoon of Thurs 18 May, 15 June and on subsequent third Thursdays throughout the summer months.

See our webpage www.blisworthheritage.org.uk

Kind Thoughts

The many kind thoughts, messages and prayers from all our friends have been a great comfort to us following the sudden death of my brother Peter. He had joined in with bowls a few times, visited the Coffee House occasionally and chatted with some of you. Although Peter didn't live in the village I think he felt part of it and I know you felt you knew him too. God Bless You All. **Pat Masterman**

CHURCH BELLS – AN APPEAL FOR RINGERS

Do you like the sound of church bells, so much a part of our English Heritage? Ever wondered how it's done?

We practice on Mondays at 7.30. It's easier than you think and a fun way of getting exercise. Please contact Chris Lea 857659 or Mason Masterman 858985 or just come along.

Blisworth + Artists from 12 other Art Groups come together

It may be as you are reading this that the **Blisworth Art Show** is about to start or is in full swing. If so, put away the lawnmower and the vacuum and head to our newly decorated **Village Hall**. There are some fascinating works for sale and members of the newly formed **Pottery Group** are exhibiting their work for the very first time. So please do come along and browse over a cuppa.

29th & 30th April – 11am – 5pm

Free entry – catalogues still only 50p

Thanks to the Village ladies we have tasty refreshments too. Maggie Turton

Old Cemetery (High Street) - Planters Best Village

Thank You to the WI ladies, and the other 8 people who regularly maintain their chosen memorials. An enormous thank you to Andy Newbury for the tireless mowing of the paths. To Steve Billing for the tree pruning undertaken each season. To Alistair Anderson for the watering of the new hedge. To my neighbour Valerie Haywood for emptying and replanting the High Street planters. Summer planting will be done at the end of May.

A Plea for more residents to take on a memorial or indeed any help with assisting with the upkeep of this lovely wildlife conservation area. **Paulette Kennedy**

Blisworth Sunday Fishing Club

First match is on **May 7th** at Dennetts (Daventry). Draw at 7.30—5 hours, all matches are £11. Regular anglers only please.

Last years winners, 1st Russ Husbands, 2nd Phil Humphrey, 3rd Tom Carter.

Contact Ringo 859584

Next Round & About copy deadline is:

Friday 23rd June for the July/August Issue.

Please email items you wish to include to:

ra@blisworthparishcouncil.org.uk

or send to the Editor: Alan North
89 Buttmead, Blisworth, Northants

THE PARISH COUNCIL ACCEPTS NO RESPONSIBILITY FOR ANY OF THE CONTENTS OF THIS NEWSLETTER.