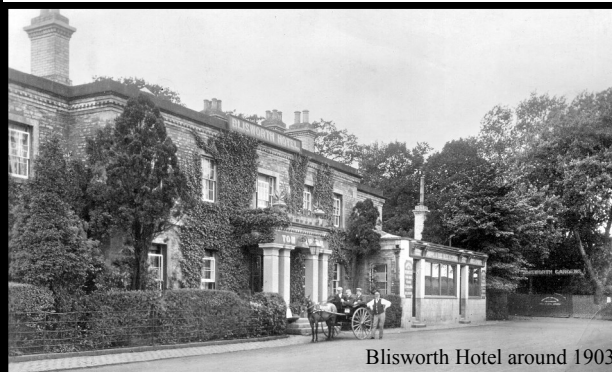


Round and About

Blisworth Parish Council Newsletter
March/April 2017 No 114



Blisworth Hotel around 1903

Notes from the Chairman.....

Planning

Other than the on going saga of Rail Central and the Northampton Gateway schemes “for which we must thank Mark Redding and the Stop Rail Team for now leading our opposition to both schemes.” The only other contentious application is an appeal by the developer against SNC’s refusal to allow the development of five houses in the grounds of Candle Cottage. Your PC opposed this scheme and have written again to SNC supporting the refusal.

Neighbourhood Watch Co-ordinator

Unfortunately due to other commitments, Sarah Sharpe our co-ordinator “who has done an excellent job of keeping the village informed of any problems” has had to retire from the position, therefore we are looking for a replacement from within the village, if you have the time and would be interested in taking on this position to assist in the security of our village, please contact our clerk Viv Hartley or myself.

Register to Vote

It is mandatory to be registered and SNC are contacting all unregistered households stating they will be removed from the electoral roll, if you receive a letter ensure that you register your household.

Superfast Broadband Or the lack of it!!

We are aware that some areas of the village are still on very slow broadband speeds. Our District Councillor Stephen Clarke has taken on the role from SNC to gather information about areas with poor service. If you have slow access, please contact Stephen on stephen.clarke@southnorthants.gov.uk and let him know the following: your address, phone number and if possible your download and upload speeds. This applies to businesses as well as private households.

Annual Parish Assembly

This year we are holding the Annual Parish Assembly on **Sunday 19th March at 2.30pm in the village hall**, this will co-inside with the end of our litter pick week and prizes will be given out. We also hope to be able to display our new village website, which will be available for use by all village organizations, many of these organizations will be in attendance and for all exhibitors and visitors complementary tea and cakes will be served during the afternoon.

Charlie Jeffery, Chairman Blisworth Parish Council.
07778-001780

Help for Heroes

Once again Mick Wreford and his family have done a magnificent job, their Christmas lights raised a tremendous £3,174.55 for Help for Heroes as well as keeping Blisworth on many people’s Christmas visit list.



Blisworth Canal Partnership

We hope that everybody has the **festival dates** firmly ringed in their diary. **Saturday August 12th and Sunday August 13th 2017**, for those who have missed the publicity. We’ll be holding another Open Festival Meeting in March, keep a look out on the village notice-boards and in the village

column in the Chron for the date.

A big thank you to Maxine and Bhola at The Royal Oak who have agreed to sponsor the festival posters. A great gesture from a great community pub. **Also huge thanks to Sandy Lane Plants** who will be sponsoring the Open Gardens this year. The festival relies on generous gestures. This is absolutely true of the **Northampton Motor Cyclist’s Club** who always make a wonderful donation to the festival following the Wild and Woolly. Their ongoing support is really appreciated.

Please Contact Jan (details below) if you work for or can suggest a company for us to approach who might like to get involved in what is now a major county/waterways event.

Mikron Theatre will be returning to perform in the Old Rectory garden on **Friday June 9th**. The performance will start at 7.30pm and will celebrate the history of the RNLI. The players never fail to impress with just the minimum of props and a cast of four. No need to book, entrance is free with a bucket collection at the end. The RNLI have accepted our offer to attend and will answer any questions about their organisation today and how you can help.

The stage is now set for the installation of the **long awaited knee rail** around two of the Tunnel Car Park boundaries. Canal and River Trust have cat scanned the area and given us permission to dig and our volunteers are just sorting out dates in their diaries. When this is in place and some of the boundary vegetation cut back, the car park will look much tidier and safer.

Jan Andrews 07919 003704
blisworthcanalpartnership@hotmail.co.uk

ARE YOU A CARER?

Northants Carers care about you
Jenny will be at the Coffee House on
Tuesday 21st March and Tuesday 18th April
10.00 until 11.30am

To help you with benefit queries
to arrange for someone to sit with your
loved one whilst you shop or have a break
We are here to help, so please come along.



Blisworth Heritage Society



Mar 10 at 7:30pm in the Village Hall
The Courtier and the Queen – Queen Elizabeth 1 & Sir Christopher Hatton of Holdenby by Malcolm Deacon

Apr 7 at 7:30pm in the Village Hall
A Brief History of Blisworth by Beryl Andrews and Hilary Spurrier

The Records in our new display cabinet in the Parish Church will be available to browse on Thursday 27th April 2.30-4.30 (tea/ coffee and cakes will be provided) and on subsequent third Thursdays throughout the summer months.

See our webpage www.blisworthheritage.org.uk

Blisworth Film Club

The following films have been booked for the coming months, to be screened in the Village Hall. As usual doors open at 7.00pm for a 7.30pm start. Admission £5. Bring your own drinks and cushions.

March 30th 'Chicklit!' A low budget British comedy with a host of well known faces. Four men attempt to raise funds by writing a 'mummy-porn' novel with an interesting outcome! Recommended.

April 27th 'The Light between Oceans' A baby arrives on a lonely lighthouse, the dilemma about its future causes many problems. A highly recommended film with many awards.

Make a note of these dates, put them in your diary now!

Margaret Holiday on 858590 or Beryl Payler on 858476.

1st Blisworth Scout Group

This is a busy time of year for all our Leaders as they begin to plan activities that will see the young people out and about. Camps, hikes, visits all take time to organise and permissions obtained so the sooner they start the better.

Blisworth is very fortunate as the majority of Leaders are long standing and very experienced which ensures our youngsters get the best from scouting. Unfortunately these days the biggest problem facing groups and Blisworth is no exception is recruiting adults. Scouting gives so much to adults as well as young people. Skills learnt and challenges faced as a Leader have a positive impact on lives, it's well known colleges, universities and employers view scouting favourably. Besides that, where else can you have fun and try activities you perhaps didn't have the opportunity to do as a youngster. If the thought of taking part in activities worries you, Blisworth Group also need Committee members to look after the Scout Hall and administration of the Group, we're looking for a Group Scout Leader too.

Groups need adults, if people don't come forward groups can and do close or are limited to the numbers of young people they can take, that's why there's around 35,000 young people in the UK on waiting lists to join scouts. You can make a difference why not pop up to the scout hall and see for yourself what fun can be had we'd be very pleased to see you.

Sandra, Group Contact 858764

Notice Boards

Thanks are due to the WI and particularly Janet Steeper and husband John for tidying up and maintaining all the notice boards and telegraph poles by taking down any out of date notices and removing as many old pins and staples as they can! When the weather gets better John will repair and re stain the notice boards.

Blisworth Parish Church

"He was beaten, he was tortured, but he didn't say a word. Like a lamb taken to be slaughtered and like a sheep being sheared he took it all in silence. Justice miscarried, and he was led off – and did anyone really know what was happening? He died without a thought for his own welfare, beaten bloody for the sins of my people. Even though he'd never hurt a soul or said one word that wasn't true".
Isaiah ch. 53 vv5-9. The Message Bible.

There are many good translations of the Bible, but The Message is the most modern, written in everyday language, which many people find appealing and easy to read.

We will shortly be in the season of Lent, the six weeks leading up to Easter. You may notice that the church looks somewhat "plain" with the sombre blue altar frontals and no banner or flowers – and immediately before Easter, no hangings at all. But that will change on Easter Morning when we celebrate and rejoice in our Lord's Resurrection.

Lent begins on March 1st, Ash Wednesday, when there will be a short service at 7.30 pm. During this service it is customary for the Priest to mark the sign of the cross on the foreheads of members of the congregation, if they so wish. However many people simply come to enjoy the peace of a brief time away from the cares of the world. The previous day, of course, is Shrove Tuesday, or pancake day, the ideas of which was that people ate up the rich or sweet food that they were about to give up for Lent. Perhaps we should not think of Lent as only a time to give up something, but to take up something – perhaps regular visits to a lonely person, service to the community, or a deeper study of the Bible or one of the books produced to be read during Lent. And the lack of chocolate will help the waist line too!

Starting on Monday March 6th there will be a series of six one hour discussion sessions held in turn at three different venues. The book to be studied is Stephen Cottrell's "The Things He Did", available from the Rector at £6.99. Anyone is welcome, enquiries to the numbers listed below.

On Easter Sunday, April 16th, there will be no 8 am service, but all will gather together for a service of celebration and communion at 11 am.

Rector	The Revd. Andrea Watkins	857619
Warden	Fiona McKenzie	859541

Courteenhall Road Allotment Site

There are a few vacant plots on the site. Now is a great time of year to get started on a plot. The soil is starting to warm up, but there is still time to prepare the ground for sowing and planting. Once ground has been dug over, it is a good idea to cover it with polythene to speed up the warming process. Seeds germinate more readily and plants establish quicker, if the soil is warm.

If you are interested in taking on a plot, please contact Jane Hill on 858656.

Blisworth Women's Institute

The New Year was welcomed in at our January meeting with a splendid musical evening. Jackie Faye entertained us brilliantly finishing off with a leg kicking dance to 'New York', 'New York'.



We have an exciting and varied programme for the new year - 'The many faces of fiction' in March, 'Native Americans' in April and a BBQ and a visit to The Guildhall in Northampton in the summer months, to name a few. Meetings are the second Thursday of each month at 7.30pm in the Village Hall, ladies of all ages welcome. **Tina Alexandrou**



Neighbourhood Watch

There is a new and much better way of sharing information about NW as you can select information that is relevant to you.

The police post notices on this site and, if you register, email you direct. Please register on this link: <http://www.northamptonshireneighbourhoodwatch.co.uk/>

This is my last post as NHW coordinator as I am resigning the role. If anyone is interested in taking it on, please contact the Parish Council. Thank you for your support over the last year. **Sarah Sharp NW Coordinator**

Blisworth Play Reading Group

The Group meets first Wednesday morning in each month. Our next meeting will be Wed 1st March, followed by Wed 5th April. Over the year we will be reading a bit of everything: classics, pantomime, farce, Agatha Christie and even 60's Radio Comedy Scripts. If you would like to come along and join us, you would be most welcome. For further details, please phone **Dick Hennessy** on **858602**.

Monday Evening Art & Craft Group

7.30 to 9.30pm in the Baptist Chapel Coffee House
There are still a few vacancies. Further details: Beryl Payler 858476 or Maggie Turton 858594

Blisworth Baptist Church

God loves us all so much that He sent His Son to die for us and because of this we can know abundant, eternal life.

Family Service every Sunday at 10.45 am
Communion every First and Third Sunday
Crèche available

Coffee and tea are served before the service from 10.00am and also afterwards in the Coffee House

Maundy Thursday Service
April 13th at 7:30 in Chapel
Remembering "The Last Supper of Our Lord"

Easter Sunday 16th April at 10:45
"Come and Celebrate the Risen Christ"

Next Men's Breakfasts: March 25th & April 29th

Pastor: Keith Barker – 01327 352972

Stitchery Do

Creating with fabric and thread



Are you wishing you could finish off that project you started years ago? Are you looking to develop new sewing skills? Do you enjoy the company of other like minded, friendly craftspeople? If so, why not come along to the monthly Stitchery Do sessions, held on the first Thursday of every month in the warm and cosy Chapel Coffee House, or, during summer months, the light and airy Scout Hall. It's only £4 per session, which includes refreshments, advice and demonstrations by a range of experts. Sessions run from 10.00 until 2.30pm. Annual membership is only £1, which gives access to a number of discounts at specialist traders. For more details contact Margaret on 858590 or Carol on 858776.

On March 2nd, Madeleine from Northampton Embroiders Guild will be demonstrating how to make a beaded pendant. All materials are provided.

On April 6th, Sandra, also from the NEG, will demonstrate how to create 'Fantastic Felt Flowers' using beads and threads. Kits will be available.

The Woad Works Barn Dance

The event on 4th February went very well and it was pleasing to see so much village support, with slightly more people than we were expecting! We hadn't realised there was a past history of Barn Dances around the village. As a result there were several requests for this to be repeated. We are thinking about this and may do so in 6 months or so.

The event raised £556.29 for the Laura Hillyer Fund (CRY) after a slight miscount during the event was corrected. The roll for a bottle was counted twice, though no one had drunk from that bottle at the time!

It was noted that this level of support would probably make it viable to repeat, though the venue might need thinking about.

Thanks everyone for supporting and donating it was a fun evening with a lot of laughter.

If you want to try a bit of Border Morris dancing we usually meet Monday night 8pm at the Leisure Hall in the Chapel, or give me a call.

Mike O'Connor 07801494140 Woad Works Morris

BLISWORTH ART SHOW

Village Hall 29th and 30th April

11am to 5pm both days - Free entry – catalogues 50p

Free & easy car parking - Disabled access

Refreshments available

Over 40 Artists from around the County will be exhibiting traditional & contemporary work in all media which promises to be exciting and vibrant. Cards, pottery and sculpture will also be displayed.

Most work will be for sale. Please do visit us and enjoy meeting friends over a cuppa while you browse.

Jazz at the Walnut Tree

Sundays at 12 noon. Phone **Tad Newton** on **858549** for details. "Easter Special Eggstravaganza" April 16th.

Blisworth Community Choir (Musical director Helen Thorman)

Thanks to all who attended our Christmas Concerts at The Abbey Centre, Holy Cross Milton Malsor and St John's.

We practiced hard, sometimes thinking we would never get it together in time! but we got there in the end. We managed to master: Joseph and the Amazing Technicolor Dreamcoat, The Hallelujah Chorus and the rest of the programme all of which was new for us.

We collected just under £1,000 in all, £420 at St John's in aid of CRY (Cardiac Risk in the Young). The rest went to 'The Cynthia Spencer Hospice' and 'Women's Refuge'. Thank you all for being so generous.

We are rehearsing at Milton Malsor church (it's warmer there!) every Thursday 7 for 7.30 pm, subs £2, plus £10 to cover the cost of music. If you feel like joining us and have fun you are more than welcome to come along.

Our next concert is at 'St Mary's Stoke Bruerne' Friday 24th March to celebrate their 800th year. We look forward to seeing you there. **Winnie Bateman**

Blisworth Pre School

Pre-school is open Monday - Friday term time, 9.00 until 12.00. Lunch Club available until 1.00pm Tues/Wed/Thurs. A few spaces now available. Please contact Pam on 07803662433 to arrange a visit.

BVHPFA 250 Club Results

	January	February
£30	204	47
£20	185	240
£20	192	213
£10	246	161
£10	229	53

Thank you to all our members. There are still a few numbers left, for just £10 a year you have 5 chances a month to win and you are also supporting your village. Please contact. Estelle Rose 858482 **Estelle Rose 858482**



Blisworth Community School

Upcoming Events at Blisworth Primary

Family Bingo - Friday 3 March - all guests welcome. Jacket Potato and filling can be booked in advance. Bingo tickets

on sale from 5.45pm. Eyes Down at 6.15.

Mother's Night In - Friday 24 March 7.30pm -Ladies welcome to join us. Film 'Bridget Jones's Baby' and a glass of Prosecco (adults only) Free glass of Prosecco for tickets purchased in advance.

Tuesday 28 March 10.30am -School choir will be singing Easter Songs at the Coffee House.

Easter Assembly - Wednesday 29 March 9am and 2.30pm. Join the school for a traditional celebration of Easter Time.

A reminder that a cooked dinner is available to Senior Citizens on Thursday lunchtimes during term time. Please ring the school office for more details 858414.

Celia Irwin - Head Teacher

BLISWORTH SHORT MAT BOWLS CLUB

We meet four times a week, Monday, Wednesday and Friday afternoons and Tuesday evenings. We are a friendly group who enjoy a game of bowls, a laugh and a chat over tea and biscuits at half time, and bit of gentle exercise.

If you are interested in having a 'go' we can provide the bowls, so all you need is a pair of heel-less slippers!!! You can be guaranteed a pleasant couple of hours, no-one needs to feel embarrassed as we all had to start sometime.

We (the Club) was formed in 1989, so we are a well established part of village life. If anyone is interested in joining us we offer the first three sessions free and should you decide to join, we ask a yearly subscription of £6.00 and a fee of £1.50 each time you play. For more information give me a call on 07775522012. You will be sure of a warm welcome. **Stan Tyrell (Sec/Chair)**

Stoke Road Allotment Association

*Dear Gardener. Do come to the Village Hall on **Monday March 27th**. It is the Spring meeting and a very popular speaker is returning after 10 years, John Matthews of **The Vintage Garden Store** will be introducing some old friends – Tools and Implements, and Trugs and Troughs that help with watering, digging, hoeing and planting. The meeting is open to all.*

*If you have a vintage garden implement and are interested to know more, bring it along. Any unused or unwanted seeds can be brought along to swap for some you might like to grow this year. With free admission, complimentary refreshments and a great raffle, it is **not to be missed**.*

Good Gardening, Jane Percival 858478

Mothers Club Bingo Night

Mothers Club are having a bingo night on March 21st in the village hall at 7.30. All are very welcome.

Best Village Application

A small team from the WI are working hard on this year's Best Village application. Many residents have filled in slips saying what Blisworth means to them, if you would like to add your thoughts please get them down and handed in to any of the WI team asap; the deadline is March 16th. Information is being collated on all the activities and how organisations work together with village events. We have a wonderful village with something for everyone, so come on - lets show them what makes **Blisworth The Best**.



Blisworth Bookworms

Andrew Motion, Ben Elton and Joanna Cannon with her first novel 'The Trouble with Goats and Sheep', have been among the thought-provoking, humorous novels enjoyed so far. Next meetings: **March 27th & April**

24th. 7 Westbrook starting at 1.30pm. Maggie Turton

Next Round & About copy deadline is:

Friday 21st April for the May/June Issue.

Please email items you wish to include to:

ra@blisworthparishcouncil.org.uk

or send to the Editor: Alan North
89 Buttmead, Blisworth, Northants

THE PARISH COUNCIL ACCEPTS NO RESPONSIBILITY FOR ANY OF THE CONTENTS OF THIS NEWSLETTER.