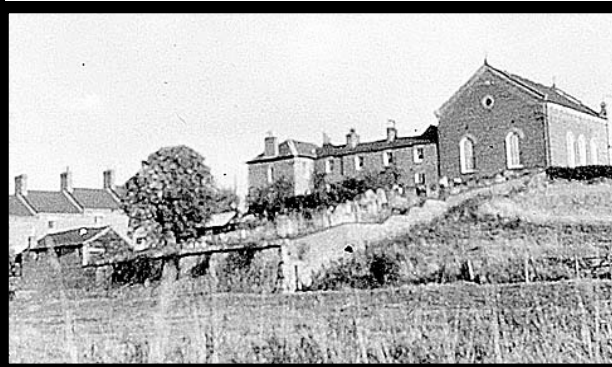


Round and About

**Blisworth Parish Council Newsletter
March/April 2016 No 108**



Notes from the Chairman.....

Planning

Rail Central!!

Your Parish Council was informed by Nalc (The Parish Councils advisory body) that until we received a formal planning application, we could not comment or support any protest group. If we were to do so, your PC could be accused of a predetermination decision by the developers. We are now challenging this advice and hope to be able to reach a formal decision at the PC meeting in March.

Your PC has just received notification that Ashfield Land wish to hold a consultation event for one week during the last two weeks in April or the first week in May.

Chapel Hill Development

The Developers are still trying to obtain a right to use Little Lane/Chapel Hill as the construction access. Your Parish Council is vigorously fighting this and will be attending the Decision Committee Meeting to voice our opposition.

The Sun, Moon & Stars

The planning application is now in. Local residents and your PC are concerned about the parking allocation and will be making representations at the Planning Committee meeting.

Field walks and rights of way

Councillor Gardiner and I recently met with Johnny Wake (Managing Partner of Courteenhall Estates) Johnny had requested that we would walk his field boundaries that butt onto the houses in Connegar Leys. He is concerned about the number of households backing onto the estate's land that have installed a gate to gain access into the field.

Whilst Johnny is prepared for villagers and their dogs to walk the boundaries of his fields on a permissive basis, he has been advised by his solicitors to write to the households concerned with a notice of permissive access. This means that the estate allows people to have the gates by way of individual written agreements with each household, in addition they will be given permission "on a permissive basis" to walk around designated fields.

We request that households cease the practice of installing entry gates onto private land. If you wish to gain access contact the Landowner first, where I'm sure all reasonable requests will be met.

Your village needs you!!

Due to his involvement with the Rail Central action group, Mark Redding has stepped down from being our Neighbourhood Watch Co-ordinator. Therefore, as well as a requiring a Highways and Footpaths warden we now also need a Neighbourhood Watch Co-ordinator! If you are interested in either of these satisfying, if unpaid, positions please contact, Viv our clerk, or any Parish Councillor.

**Charlie Jeffery, Chairman Blisworth Parish Council.
07778-001780**



Stop

Rail

Central Limited (SRC) was incorporated on the 21st January as a not for profit, non-political Action Group to oppose the proposed development of a Rail Freight Interchange on the open farmland between Blisworth and Milton Malsor. The group's sole purpose is to "clearly and rationally demonstrate why the proposed site between Milton Malsor and Blisworth is totally inappropriate for a Strategic Rail Freight Interchange (Rail Central)".

The developer is Ashfield Land, a private (profit making) commercial company with no connections to Network Rail or any government bodies. The project is known as "Rail Central". The group, comprising residents of a number of villages, was unofficially formed at its inaugural meeting on 11th January and has already made significant progress in raising awareness of their very serious concerns and also in pulling together a competent and committed action group to fight the proposal by all means at their disposal.

The group will be using the web site purchased www.stoprailcentral.co.uk to keep interested parties informed of developments. Please contact us via the web site if you would like to offer any form of assistance. In particular we would welcome those with experience in the fields of media / publicity and fund raising. This development would destroy two rural communities and have a seriously detrimental effect on surrounding communities, and as such SRC believes that we must all do everything we possibly can to oppose it.

ARE YOU A CARER?

Northants Carers care about you

Jenny will be at the Blisworth Baptist Chapel Coffee House

On Tues 15th March and Tues 19th April

To help anyone with benefits problems or needs someone to sit in whilst they have a break or just need someone to talk to. Everyone is welcome.

Blisworth Village Hall & Playing Fields Association are delighted to receive a **Grant from Tesco's BAGSOFHELP INITIATIVE** to resurface the track from the Football Club to the Community Scout Hall so **No More Potholes.**

We are one of three projects in our region hoping to improve our grant by public voting. YOU will be able to vote in Tesco stores in Northampton and at Mereway for the week **27th February to 6th March.** So please vote with a token for your village project.

'Cathy' from Blisworth Park

Many thanks to SNC who helped to arrange Catherine Miles' move to Leeson Court Assisted Living Care Home where she is very happy. **Also - a huge thank you** to everyone who helped in so many ways. From the generous spontaneous help of the WI when Cathy's plight was first known to the simple but so meaningful individual chats that she enjoyed. Cathy's story is a true reflection of community spirit that makes Blisworth such a great place to live.

Blisworth Women's Institute

The December meeting was of course our Christmas Party and we were joined by Milton Malsor & Collingtree WI. It really was a fun evening; the theme was 'Downton Abbey Style' and many people dressed up in 'period style'.

Everyone was given a 'sticker' with a name on it and the aim was to find your other half! i.e. Romeo/Juliet, Tom/Jerry etc. a great way to get to meet other members.

One member had dressed a table in period fashion with homemade decorations, plus crackers for the smaller tables. Her husband had been busy as well making wooden Reindeer who all seemed to have their own personality! These were all sold in aid of McMillan Nurses - many thanks to Janet, her husband and all her helpers. Food was provided by members of all three WIs and the table 'groaned' with lovely Xmas fair, Blisworth members providing the delicious desserts - thank you one and all. The evening ended with Secret Santa presents.

Our January meeting was a talk with slides by a member entitled '80 Degrees North'. It was most interesting to see what completely different lives people live in such extreme temperatures and good to know that many old traditions are being kept alive by the younger generations. Tea, cake and friendly chatter ended another evening.

We have a full and enjoyable diary of meetings this year, as well as other outings arranged by the Northants Federation, such as Coventry Cathedral, World of Wedgewood, jewellery workshop at WI House and much more, something for all tastes, so why not join in the fun.

Meetings every second Thursday of the month at 7.30pm in the Village Hall. **Tina Alexandrou**



The Blisworth Jogger Community Minibus

Many people have rightly asked what is happening on the project. It has 'stalled' as the original working party have had to disband due to changing commitments and availability. An excellent start has been made and nearly £3000 has been raised solely dedicated to this project. It would be good to re-start with a new team. If anyone is willing to help this project please contact Hilary Spurrier (h.spurrier.123@btinternet.com).

Blisworth Parish Church

Christ will suffer and rise from the dead on the third day, and repentance and forgiveness of sins will be preached in his name. Luke 24: 46-47

We are now well into the season of Lent, when you may notice that the church looks somewhat bare with no flowers and no banner, and the sombre blue altar frontals. But this will all change on Easter Morning when we celebrate and rejoice in our Lord's Resurrection. Lent of course is also the time when many people "give up" something they like - usually chocolate or wine. But many will consider it also a time to "take up" something, such as a service to others.

The normal Sunday services of course continue, and during Holy Week there will be evening prayer and other events in church and around the benefice. On Maundy Thursday there will be a service of Holy Communion at 7.30, and on Good Friday a service at the Cross at 12 p.m. Full details will be available later.

Rector	The Revd. Andrea Watkins	857619
Wardens	Fiona McKenzie	859541
	Angela Cheesbrough	01327 349425

No. 86 Bus Services

The number 86 bus service, Connegar Leys, Buttmead and the Park has changed operators, please check the timetable.

Woad Works Morris Dancers

We are still practicing in the village, though so far no villager has wanted to help keep England's Traditional type dances alive or get some good exercise! You've probably seen traditional foreign dancers when abroad and wondered how they do that, well British dances are just as good and are appreciated by people from other countries.

We practice on a Monday night at the Baptist Leisure Hall and you're welcome to come timing is 8-9 pm but we are not there every Monday as we sometimes alternate with a practice in Northampton. If you want to check give Mike O'Connor a call on 01604 858764.

Parish Plan Progress Group

The Group were asked by the Parish Council to respond to South Northants Council's request for consultation on the 'Open Space, Sport and Recreation Review for West Northamptonshire'. We were able to do so by using the talents of one of our members, Trisha White, who amended the maps and legends to accurately reflect the facilities we have in Blisworth. Ann North Secretary PPPG



Blisworth Heritage Society



11 Mar Blisworth to Peterborough Railway
by Richard Deakin.

27 Mar Easter Egg Hunt starts from the Parish Church between 2:00pm and 4:30pm

8 Apr The Wonderful World of Metal Detecting
by Alan Standish.

Please note the dates of these meetings are at our new regular time 7:30pm **second** Friday of the month.

Would you like to help steer the Society, keeping it vibrant and doing important work exploring Blisworth's rich Heritage? New enthusiasts are always welcome to join the committee, come along to any meeting or contact the Chairman.

See our webpage www.blisworthheritage.org.uk

Courteenhall Road Allotment Site

I have just come in from a morning working on the plots. The soil is still very cold so I have been tickling some of the beds over and covering with clear polythene. This will warm the soil up, so that I can sow seeds a few weeks earlier than would otherwise be possible. It will help to make the hungry gap shorter.

By the end of the morning, I left the plot with a sense of achievement, already looking forward to this year's harvest. While I worked, the sun had come out and the birds were singing, making me feel glad to be alive.

If you would like to experience the joy that working an allotment can bring, please contact me, **Jane Hill**, on **858656**.

Blisworth is The Best!!

We won all 3 categories in 2012 and achieved *Highly Commended* last year. This year we can show we are **The Best Village** again!

We need to '*demonstrate community enterprise and initiative in caring for residents. Show how the appearance of the village is looked after. What we have done to improve the village and plans for the coming year.*' *'Banding together to oppose some unwelcome nearby development proposal'*

Let us know what YOU think makes Blisworth **The Best Village!** Contact **Pat 07732 191778** or **Ann 858579** or any **Parish Councillor** by **14th March** please!

Blisworth Community Choir

After the wonderful success of their first concert at Christmas, both Helen and the Choir have enjoyed a well earned break.

We commenced again on Thursday 4th February. If anyone is interested in joining us, you will be made most welcome. We meet in the Church every Thursday night 7.30pm-9pm. The subs are just £2 each week. Just come along and see.

Blisworth Bookworms



The next meetings: **21st March & 25th April** 1.30 - 3.30pm 7 Westbrook. Would you enjoy a good chat about the book you have just read? Then do come along. **Maggie Turton**

Blisworth Pre School

Pre-school is open Monday - Friday term time, 9.00 until 12.00. Lunch Club available until 1.00pm Tues/Wed/Thurs. A few places are available, please contact **Pam** on **07803662433**

Blisworth Parish Church Mad March Sale

The big bric-a-brac sale will be held in the Church on Saturday March 12th at 2 p.m. It's impossible to say what bargains and treasures there may be – just come and look! Donations will be welcome from 9 a.m., but please not clothes, furniture or electrical goods. Come early – the best things go quickly.

Enquiries to **Fiona 859541**

Blisworth Baptist Church

Revelation 3 v 20 The Voice

Jesus Says:

Now pay attention; I am standing at the door and knocking. If any of you hear My voice and open the door, then I will come in to visit with you and to share a meal at your table, and you will be with Me.

Family Service every Sunday at 10.45 am

Communion every First and Third Sunday

Coffee and tea are served before the service from 10.00am and also afterwards in the Coffee House

EASTER SERVICES

Maundy Thursday Service 24th at 6:30pm
In the Chapel.

A Thoughtful Meditative Communion Service.

EASTER SUNDAY

Come and Celebrate the Risen Lord.

Celebration Service 10:45 in the Chapel

Coffee House Open

Tuesday's from 10.00am until 12.30pm

Support and Advice for Carers every 3rd Tuesday

Men's Breakfast

Every last Saturday of the month at 8.30am in the Coffee House. No breakfast Easter Saturday, next breakfast **April 30th** all men are welcome

Pastor: Keith Barker – 01327 352972

Secretary: Diane Atkinson - 01604 859590

Room bookings: Jacques Haines - 01604 859705

Short Mat Bowls Club

Due to popular demand we have added an extra session to our weekly meeting on a Friday afternoon, 1.45 to 4.00 pm in the Village Hall. We still meet on Monday and Wednesday afternoons and Tuesday evenings. Should you wish to 'Have a go' you would be made very welcome at any session. We have a laugh and a chat over as cuppa and biscuits at half time and the first 3 sessions are free!

We are holding our annual Fish and Chip Supper on April 9th. It is cooked in the car park so is nice and hot (only £8.00 for 3 courses). If you are interested in any of the above give me a call on 0777552012 and I will try to answer any queries you may have.

Stan Tyrell (Chair/Sec).

BVHPFA 250 Club

Winning Numbers are:

January		February	
Prize	No.	Prize	No.
£30	170	£30	31
£20	44	£20	199
£20	52	£20	39
£10	165	£10	232
£10	57	£10	215

If anyone is interested in joining, and lets face it, with a maximum of 250 numbers you have a much better chance of winning a small prize than with a scratch card, twelve goes a year for only £10.

Thank you to all our members. **Estelle Rose 858482**

**Highway Code Rule 53 states:**

"Never ride more than 2 abreast and ride in single file on narrow or busy roads and when riding round bends."

The roads around our village are **narrow** so please could riders observe the code and drivers **slow down**.

Proposed Evening Art & Craft Group

Several people have expressed an interest in painting and crafting on Monday evenings in the Coffee House. It would be good to have a few more folk, so please think about it and come and join in and enjoy. We plan to start after Easter. Further details from **Maggie Turton 858594**.

Members of the afternoon group are working hard to produce work for the:

Blisworth Art Show
Blisworth Village Hall
April 30th & May 1st
11am - 5pm each day

This annual exhibition attracts artists Countywide and if you have visited in the past you know that the artwork will be varied and vibrant covering all media.

So please put these dates in your diary and come along we would love to see you. Free Admission, Catalogue 50p and Refreshments available. Work will be for sale.

1st Blisworth Scout Group

Fun Family Quiz – Saturday 12TH March – 7p.m.

Cost £10 per team maximum 5 people in team. Hot dogs, burgers and drinks will be on sale. Book your team by calling Lorraine on 01604 700944.

Please support this fund raiser - profits to be used for improvements to the track.

We are also looking for volunteers for a number of tasks such as ground maintenance, admin, leaders, committee members etc. If you have an hour to spare please consider helping our wonderful young people to continue to enjoy all that scouting offers. **Sandra O'Connor 858764**

Blisworth Play Reading Group

The Group meets first Wednesday morning in each month. Our next meeting will be Wed 2nd Mar (when we shall finish the current Play). Then on Wed 6th Apr, we shall commence a new Play. Over the year we will be reading a bit of everything: classics, pantomime, farce, Agatha Christie and even 60's Radio Comedy Scripts. If you would like to come along and join us, you would be most welcome. For further details, please phone **Dick Hennessy** on **858602**.

Joan Brown

Bill, Shirley and family would like to say a big thank you for all the messages of sympathy following their loss and for the lovely big turn out at Blisworth Church to say farewell to 'Auntie Joan',

Blisworth Film Club

March 31st 'Lady in the Van' Maggie Smith is excellent as the homeless woman who parked her camper van in Alan Bennet's garden for 15 years. A true story and 'must see' with strong cast of great actors. Highly recommended.

April 28th 'Suffragette' Film drama about the beginnings of women's right to the vote. An impressive cast, period costume and riveting scenes. Very good reviews.

May 26th 'Brooklyn' Historical period drama set in 1950's Brooklyn. The story of a young Irish immigrant's arrival in New York. A profoundly moving story, "pulse-quickening good" starring Julie Walters.

For your diary: June 30th 'The Dressmaker' July 29th 'Spectre'

Blisworth Village Hall, 7.00 for 7.30 pm start, admission £5, bring your own cushion and drinks. All welcome.

Margaret Holiday 858590

Old Cemetery – High Street opposite St. Johns Church

Spring is coming! Why not visit this lovely peaceful Blisworth treasure, a Churchyard Conservation area which encourages flora and fauna of all types. Sit for a while or take a few minutes to view the Interpretation Board which explains the reasoning behind its important upkeep. We have some excellent helpers but **more** memorials of past residents need clearing and maintaining. Could you spare some time, it is very rewarding work.

Appeal: Does anyone have a birdbath that they no longer require. We need a source of water for the birds and insects. Also, as we start to look in our gardens if anyone has overgrown, herbs, small native trees, buddleia please could you contact me on 858717. Thanks Paulette Kennedy



Stitchery Do



Creating with fabric and threads.

Winter Programme 2016

Come along and meet us at our monthly sewing workshop every first Thursday of the month from 10 am until 3 pm. Only £4 per workshop including Tea/Coffee and biscuits.

3rd March - Knitting socks with Ruth & Stephanie at Blisworth Chapel Coffee House.

7th April - Crazy Patchwork with Diana Turner at the Scout/Community Hall.

Contact: Carol Arnall on 858776

Next Round & About copy deadline is:

Friday 22nd April for the May/June.

Please email items you wish to include to:

ra@blisworthparishcouncil.org.uk

or send to the Editor: Alan North
 89 Buttmead, Blisworth, Northants

THE PARISH COUNCIL ACCEPTS NO RESPONSIBILITY FOR ANY OF THE CONTENTS OF THIS NEWSLETTER.